

DUET HOMES  
in Fremont



Center  
POINTE  
COTTAGES

NUVERA  
HOMES





# (NEST)S

## THAT ARE ANYTHING BUT EMPTY

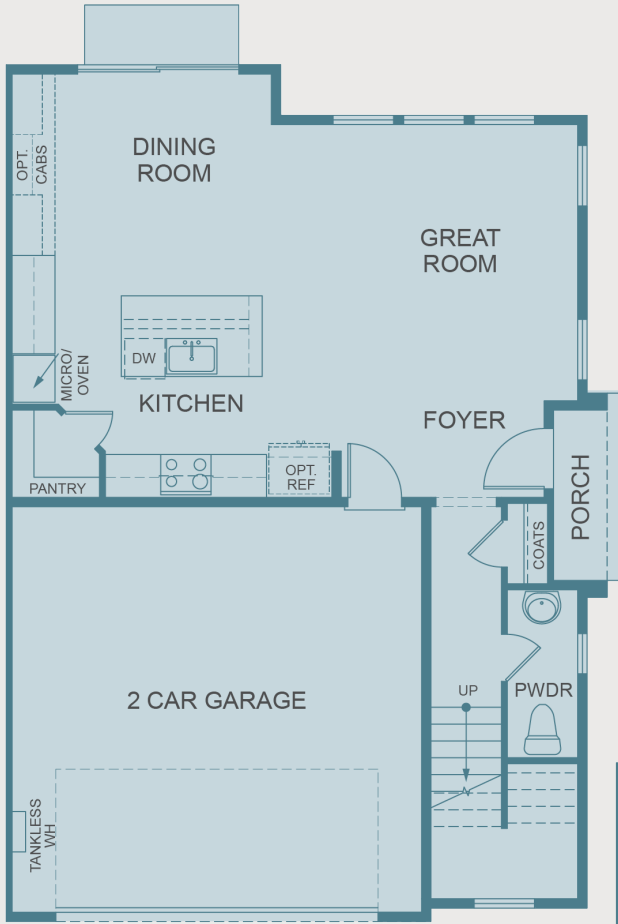
Designed to meet and exceed the ever-expanding tech needs of today and tomorrow, Center Pointe Cottages are homes are integrated with the latest in smart home features including NEST Video doorbell, NEST/Yale deadbolt, NEST Thermostat, NEST Protect (CO/Smoke detectors), and an EERO Wi-Fi system. But wait, there's more.

With solar systems and 240v outlet in the garage for an EV Charging station, you can increase convenience while decreasing your carbon footprint.

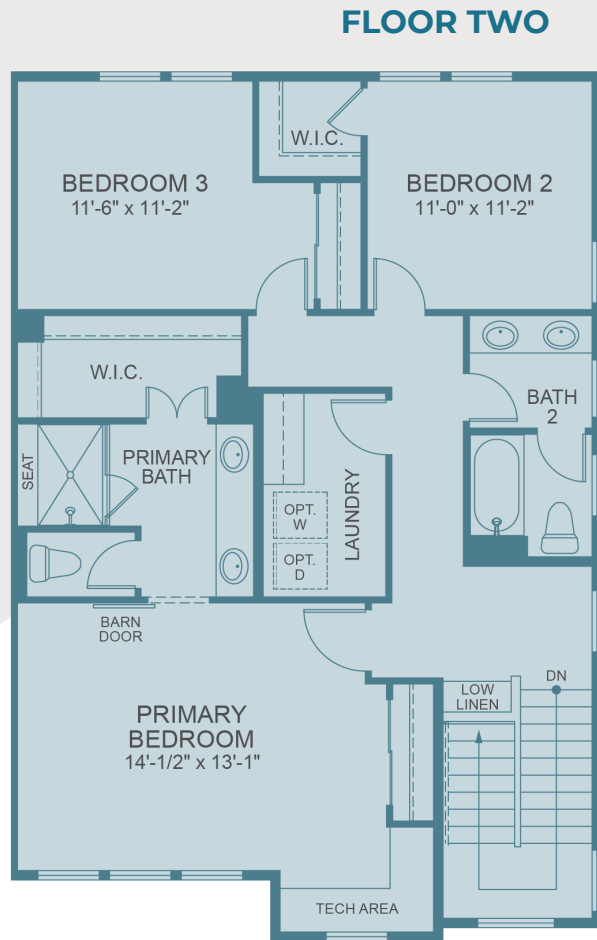
[nuverahomes.com](http://nuverahomes.com)



This is a depiction of the completed community as presently planned. Floorplans, included features and available upgrades are subject to change without notice. Square footage is approximate. Maps, floorplans, renderings and color schemes are an artist's conception only and may not include the various subtleties between plans. They are not to scale and may reflect upgrades. Each plan and lot may vary with respect to number, size and location of stairs, landings, decks, and windows if applicable. Please see a Community Sales Representative for further details.



**FLOOR ONE**



**FLOOR TWO**



**ELEVATION 1**



**ELEVATION 3**

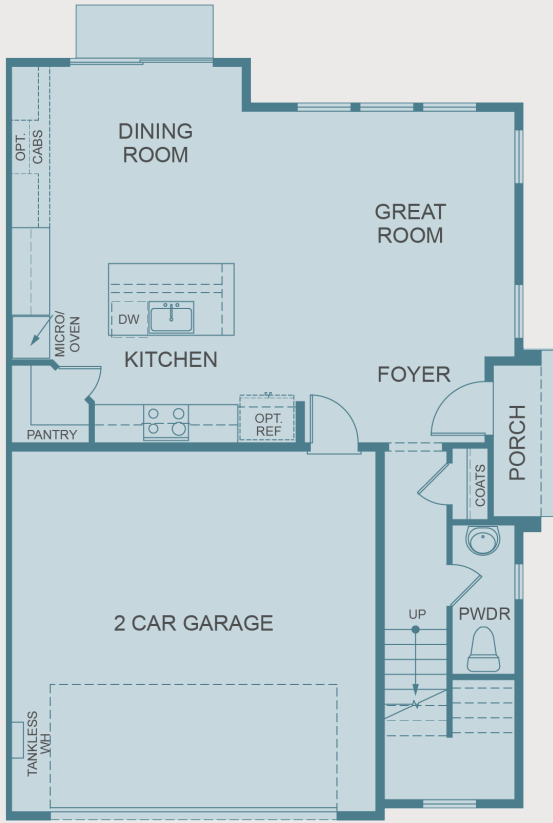
**RESIDENCE 1**

approx. 1.843 sq ft  
3 bed / 2.5 bath

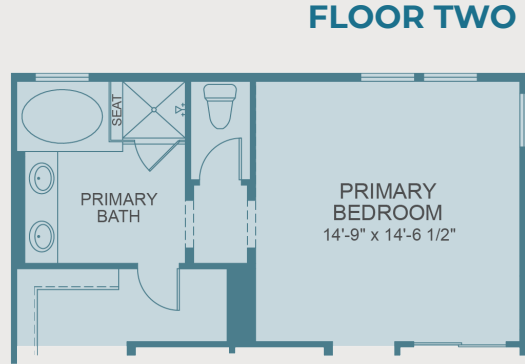




This is a depiction of the completed community as presently planned. Floorplans, included features and available upgrades are subject to change without notice. Square footage is approximate. Maps, floorplans, renderings and color schemes are an artist's conception only and may not include the various subtleties between plans. They are not to scale and may reflect upgrades. Each plan and lot may vary with respect to number, size and location of stairs, landings, decks, and windows if applicable. Please see a Community Sales Representative for further details.



**FLOOR ONE**



**SECOND FLOOR WITH HIGH GLASS**  
(varies per lot)

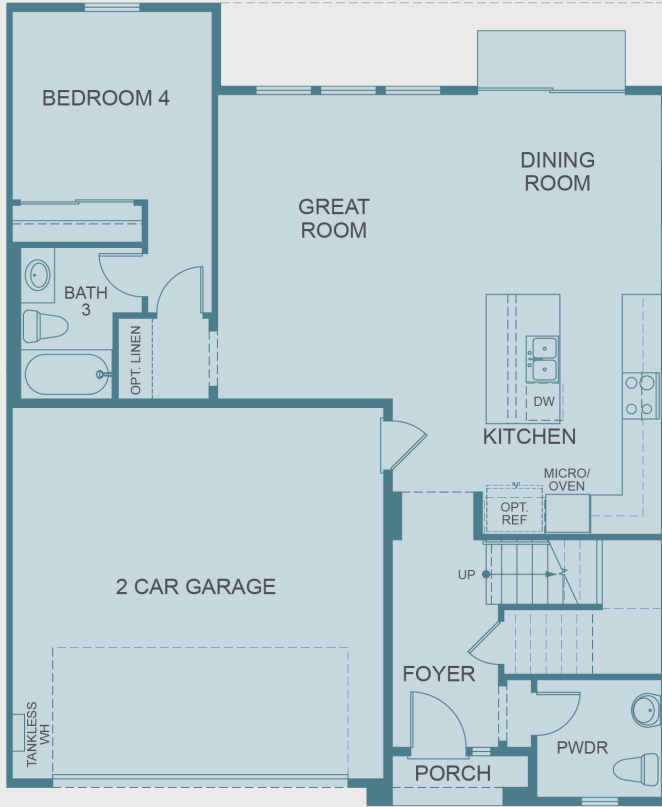


**ELEVATION 1**



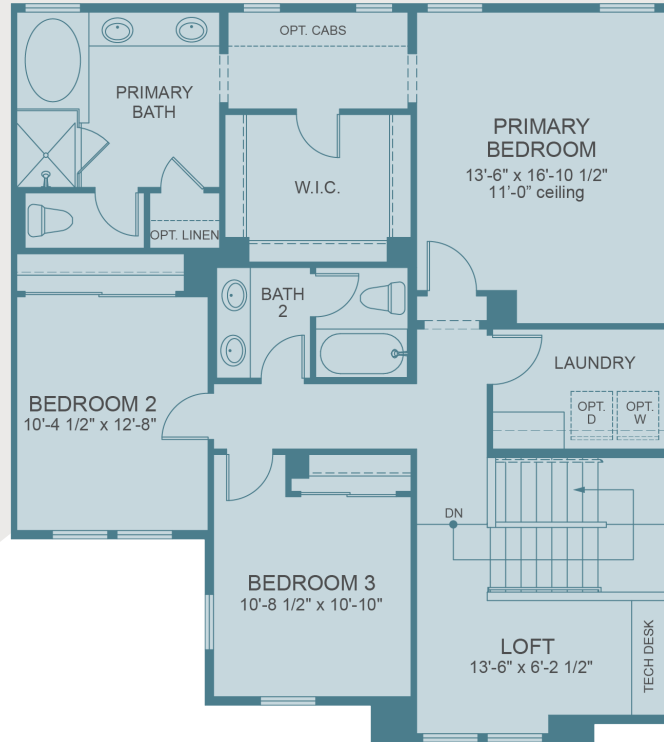
**ELEVATION 2**

This is a depiction of the completed community as presently planned. Floorplans, included features and available upgrades are subject to change without notice. Square footage is approximate. Maps, floorplans, renderings and color schemes are an artist's conception only and may not include the various subtleties between plans. They are not to scale and may reflect upgrades. Each plan and lot may vary with respect to number, size and location of stairs, landings, decks, and windows if applicable. Please see a Community Sales Representative for further details.



**FLOOR ONE**

**FLOOR TWO**



**ELEVATION 1**



**ELEVATION 2**

approx. 2,191 sq ft  
4 bed / 3.5 bath



## A Welcome Home

Brick Veneer exterior accents in Riverbed Brick, Chalkdust Brick or Latigo Brick or Stone Veneer exterior accents in Boardwalk Cliffstone, Whitebark Cliffstone or Montecito Cliffstone

NEST+Yale Deadbolt with Nest Connect and Nest Video doorbell

Kwikset Prescott handleset with Casey interior in brushed Nickle finish

Elegant Therma-Tru Craftsman 2 panel front entry door (style per elevation)

Designer-selected Minka Lavery wall mount light in San Marco-style with black finish and antique copper accents and clear-seeded glass

Steel insulated sectional garage door (style and windows per elevation) with automatic opener & battery backup

Front entrance landscaping with automatic irrigation; maintained by HOA

## Finishes are Only the Beginning

Mohawk laminated wood flooring in the entry, kitchen, dining and great room; Beachwood, Graphite, or Boathouse brown from the Driftwood Collection

Plush Shaw Union Terrace Carpet in all bedrooms, hallways, closets and contemporary Hollywood stairs

Decorative molded 2-panel square top smooth interior doors with Kwikset satin chrome lever handle from the Casey Collection

Hand textured walls in a medium knockdown finish, with bullnose corner bead throughout

Convenient interior laundry room prepped for electric or gas dryer

Recessed lighting and designer selected fixtures throughout the home

Silent touch rocker light switches

Pre-wire for ceiling fans in all bedrooms, living room, and family room

## A Happy Meal

LG stainless steel appliances:

- 36" Gas cooktop with 5 sealed burners and Superboil™ technology
- 30" Smart Wi-Fi enabled combination wall oven and Speed Cook Microwave
- Built-in 24" True Steam Sanitize Dishwasher
- Optional 36" refrigerator

Refrigerator space pre-plumbed for icemaker

Designer-selected, Zephyr upgraded 36" Hood that comes standard but is anything but

Gorgeous and low maintenance granite countertops with 6" backsplash and full backsplash at cooktop (per plan type)

Cabinetry with ample space and modern aesthetic are highlighted with sleek profile handleless cabinets with Shaker-style door in Beechwood - choice of color (Sedona or French Walnut). Optional: Frameless paint grade cabinet with additional height on upper cabinets, cabinet pull hardware, and soft closing doors/drawers available

Kitchen cabinetry is highlighted by 2 ¼" crown molding

Stainless steel, deep single bowl sink with heavy-duty Badger 5 ½ HP garbage disposal

Delta Peerless single pull-down faucet with convenient pull-out spray, showcased by a chrome finish

Generous recessed lighting, plus Kichler Winslow 7" pendant featuring a classic look with Brushed Nickel finish and clear seeded glass, and sleek under-cabinet lighting

This is a depiction of the completed community as presently planned. Floorplans, included features and available upgrades are subject to change without notice. Square footage is approximate. Maps, floorplans, renderings and color schemes are an artist's conception only and may not include the various subtleties between plans. They are not to scale and may reflect upgrades. Each plan and lot may vary with respect to number, size and location of stairs, landings, decks, and windows if applicable. Please see a Community Sales Representative for further details.

## Making Home a Hub

eero Wi-Fi system (includes 1 eero w/(PoE+) mount (2nd floor) and 1 additional eero for the structured panel location)

Prepped for electric car charging station

Nest Protect Smoke and Carbon Detector (1 per floor)

Liftmaster garage opener, featuring Wi-Fi, corner lighting, & built-in camera

2.5kW solar system; per T24 requirements

Dual zoned HVAC system with Nest Learning thermostat with weekday and weekend programming to help you save on heating/cooling costs

Telecommunications hub with pre-wired high-speed data and cable

TV outlets in master suite, secondary bedrooms, and family room

Satellite prepared with two coaxial cables

Dual USB charging outlet in the kitchen

Fire sprinklers throughout

Kelly Moore low or zero VOC paint

Tankless water heater

## Rest. Room.

Sleek Piedrafina shower walls and granite countertops with 4" granite backsplash in the master bath and guest baths

Cabinetry with ample space and modern aesthetic are highlighted with sleek profile handleless cabinets with Shaker-style door in Beechwood - choice of color (Sedona or French Walnut). Optional: Frameless paint grade cabinet with additional height on upper cabinets, cabinet pull hardware, and soft closing doors/drawers available

Dual vanity China basin sinks with Delta polished chrome faucets in the master bath

12 x 12 elegant and easy-to-maintain Daltile flooring in all baths, powder, and laundry

Designer-selected Delta bath accessories in polished chrome finish from the Ashlyn Collection

Spacious walk-in closet provides ample storage in the Master Suites

